



THE KRAFT HEINZ COMPANY

Protocolo

- Gestión CoronaVirus –

EWC 20 marzo de 2020

Agenda

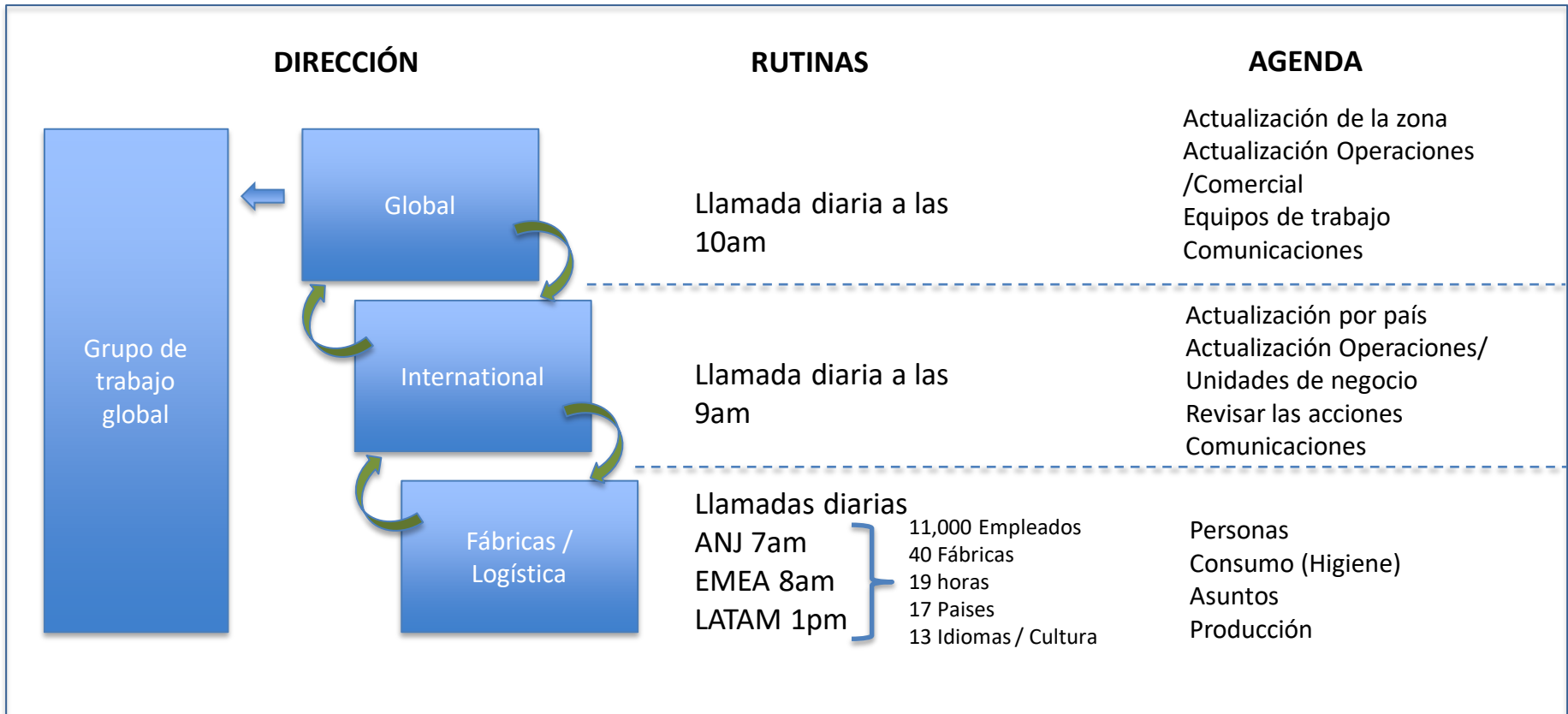
- Gobierno
- Protocolos
- Práctica

Cómo abordarlo



Cómo abordarlo

- Alinearse con la OMS, Europa y los gobiernos locales
- Agilidad, adaptación y aprendizaje
- Rutinas



Protocols



Protocolo de operaciones

- Localización [COVID-19 Operations Crisis Team](#)
- Estructura de activación y respuesta - 5 niveles
- Implementar los "Niveles de respuesta 1 y 2"
- Niveles de respuesta 3, 4, 5 caso por caso

- Nivel 1 - Preparación
 - Contacto y comunicación
 - Posiciones críticas
 - Personas de riesgo
 - Rutinas y formas de trabajo
 - Cadena de suministro

- Nivel 2 – Controles básicos
 - Distancia separación
 - Limpieza adicional
 - Lavar las manos a la entrada de fábrica
 - Control visitas
 - Comunicación

KraftHeinz [World - Corporation](#)

COVID-19 International Factories Protocols
V12 – 13th March 2020

Information:
 Good Hygiene practices apply as standard
 Close Contact is defined as 25mins duration within 2metres proximity
 Self-isolate means –

- Stay at home and avoiding other people as much as possible
- Do not have visitors and keep away from other family members as much as is practical

WHO Website <https://www.who.int/emergencies/diseases/novel-coronavirus-2019>

Principles to Follow:
 Follow WHO advice, then local Government advice.
 Any HFC Global Policies will be communicated and incorporated into the local Crisis Management teams

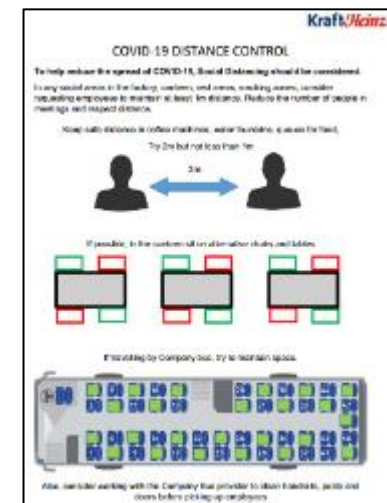
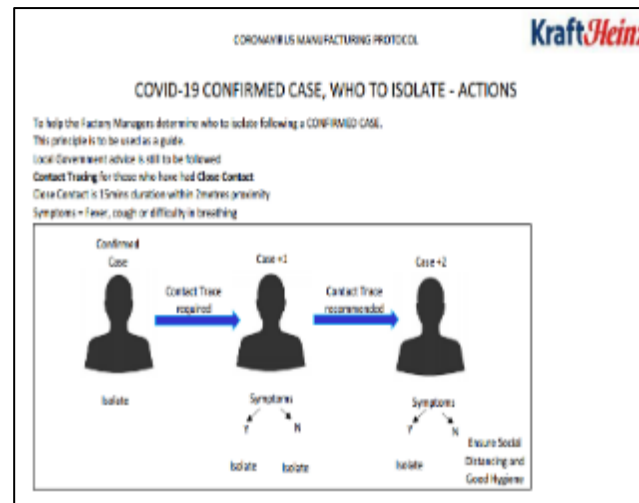
Objectives:
 It is advised to convene the factory Crisis Management Response Team (CMRT) in preparation for any further escalation.
 Factory Crisis Management Teams to set up a routine to

- Monitor Category of the location and local conditions
- Local Government Advice on dealing with scenarios
- Identify Critical roles with the Factory
- Identify any hardware and equipment requirements
- Define local ways of working
- Communicate to factory employees

Guidance to be defined locally as the situation changes.

The CMRT should escalate and feedback any relevant updates to Head of Supply who is part of the International Crisis Management Response Team.
 The International CMRT are linked into the HFC Global Crisis Management Response Team.

The following protocol should be used as a guide in conjunction with any existing local structures or local Government Government requests. The responses may be triggered by local conditions or as requested by the International CMRT.



Práctica



Distancia de seguridad

Reunión en Utrecht



Manteniendo la distancia

Comedor en El Cairo



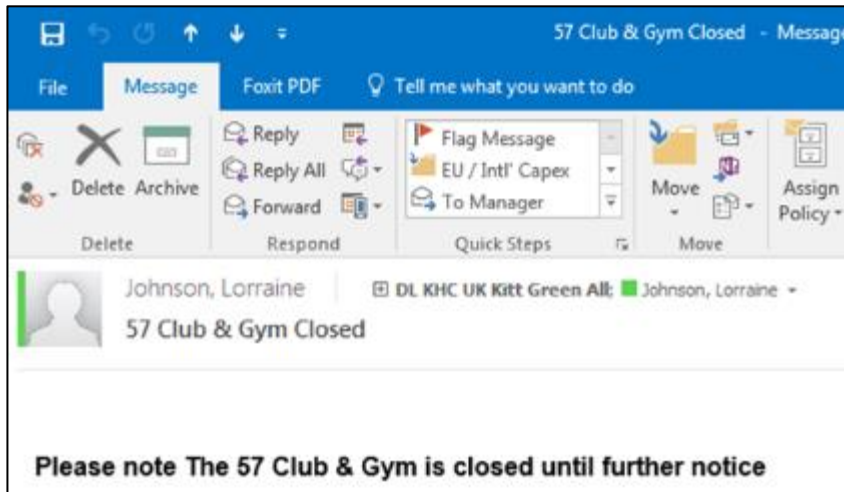
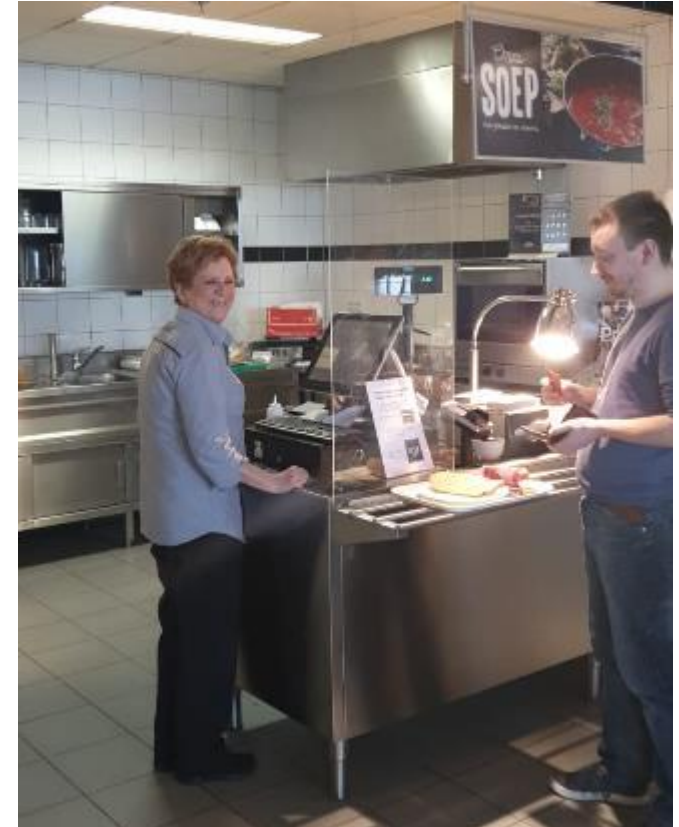
Ajustar los sitios

Distancia de seguridad

Comedor de Utrecht



Comedor de Utrecht



Se puso una pantalla para separar al personal de la cocina de los empleados

Se paga con tarjeta

KraftHeinz

Limpieza y desinfección

- Inicio de turno limpio
- Limpieza profunda después del aislamiento
- Procedimientos de limpieza de áreas comunes
- Lavarse las manos

Limpieza maquinaria en Kitt Green



KraftHeinz

THE KRAFT HEINZ COMPANY

**Cleaning, Sanitation & Disinfection
Procedures for
Work Areas and the Production Facility
16 March 2020**

Desinfección autobus en El Cairo



Entrada a fábrica - Revisión y desinfección

Cheques de temperatura en El Cairo



Protocolo y limpieza de manos en Kitt Green



Comunicaciones

Employees, Contractors and Visitors

Upon entering this site, the following rules apply:

- Everyone (employees, contractors and visitors) must sanitize their hands on entry & then wash & sanitize before starting work or participating in a meeting.
- Over the course of the day, aim to wash & sanitize your hands every two hours.
- Continue to wash & sanitize after visiting wash-rooms.
- Sanitize your hands before & after using communal facilities such as drinks areas, kitchens and canteens.
- Avoid touching your face with your hands.
- Cough and sneeze into a tissue & dispose of the tissue immediately; if you don't have a tissue cough & sneeze into your elbow



Wash your hands



Avoid touching your face



Use a tissue for coughs



WORKPLACE HEALTH AND HYGIENE TIPS



Wash your hands frequently and thoroughly (20 seconds in hot water)



Keep your workplace as clean and hygienic as possible



Maintain distance between you and anyone who is coughing or sneezing

WORKPLACE HEALTH AND HYGIENE TIPS



Avoid touching your eyes, nose and mouth



Cover your mouth and nose when you cough or sneeze and dispose of used tissues immediately



Stay home if you feel unwell

Gracias